

European Student Convention 45

Towards sustainable societies:
Student participation in higher
education

March 6th - 10th 2023

Organized by:



In collaboration with:



Foreword by ESU presidency

Dear participants at the 45th European Student Convention,

We can't wait to meet old and new friends in Lund and Malmö on 6th–10th March! **We wholeheartedly thank Sveriges förenade studentkårer (SFS)** for their commitment in organising what promises to be a memorable event.

The theme of this ESC is **'Towards sustainable societies: Student participation in higher education'**. We have now entered the **final decade to achieve the Sustainable Development Goals**, but their transformative potential has largely remained untapped. **Sustainable societies need a radical agenda to change education**, as the UN Transforming Education Summit has shown Higher Education Institutions need to play their role in supporting the overall sustainable transformation of societies, and **students must be at the core of these processes**, both in shaping and implementing these policies.

The first half of 2023 Sweden holds the rotating Presidency of the Council of the European Union. In these six months the EU Education Ministers will discuss about the future of **the European Education Area (EEA)** and the role the EU should play in Higher Education: a debate whose effects will not be confined to the Union, but will spill over to the broader European Higher Education Area (EHEA). On that, the position of the European Students' Union is clear: the policies under the EEA must be in line with the commitments of the Bologna Process, the EHEA must remain the main policy forum for Higher Education in the continent and **student rights and participation in governance must converge upwards**.

And there is no better place in Sweden to reflect about the diversity of European Higher Education Institutions than Lund, Malmö and their region, Scania. **Lund University**, founded in 1666 but whose origins trace back to the early 15th century, **is one of the oldest universities in Northern Europe**, while **Malmö University**, founded in 1998 as högskola and granted the university status in 2018, **is an example of how higher education can lead the reconversion of post-industrial districts**. And Scania is a Swedish region with deep historical ties with the neighbouring Denmark and its island Zealand (Sjælland): **the Bridge** crossing the Öresund/Øresund strait and **connecting Malmö and Copenhagen is a symbol of transnational cooperation in the Nordic region** (and, on a cultural side, inspired the homonymous tv series and all its foreign adaptations).

See you in Sweden!

The Presidency of the European Students' Union

Foreword by SFS Presidency

The Swedish national union of students (SFS) would like to welcome you all to the 45th European Student Convention. We are so glad to be able to welcome you all in person to the south of Sweden, in beautiful Lund and Malmö.

Together with the university of Lund we will open the ESC, and the university of Malmö will host us during the 8th of March. We look very much forward to inviting you to the best of Swedish student culture. In Lund, with the traditional festivities, and a long tradition of student life. In Malmö, with its new university in an urban environment, is more characterized by the proximity to the rest of Europe. However, the differences should not be exaggerated since both cities are very closely connected. During the ESC you will also meet representatives of the local student unions of both Malmö and Lund.

This ESC is held with the Russian aggression war on Ukraine still ongoing in Europe. The importance of expressing solidarity with Ukrainian students and the Ukrainian people can not be emphasized enough. The international student movement stands united in solidarity and condemnation of the war. We are so glad that representatives from UAS are able to join this ESC. The ESC is also held in times of energy crisis, inflation and economic uncertainty. As we know it is always the societal groups with small financial margins who suffer the worst, where students are one. The economic opportunities should never stand in the way of being able to indulge in academic studies.

The theme of this ESC is now more important than ever. Climate change is one of our biggest challenges we face together. The global scope of this question makes international collaborations even more important than ever, where the European student movement is one. The change towards a sustainable society challenges all parts of society, and also higher education. But higher education also has a key role when it comes to the education, research and innovation of tomorrow. It is therefore crucial that the perspectives of students are included and that students are an active part in this transformative work.

As national students unions, we are products of students organizing and joining together for our mutual interests. And even more so, when we share experiences and learn from each other over national borders. Higher education is international to its very core. We look very much forward to keep learning from each other, but also to enjoy a good time together.

Regardless of whether this ESC is your first, or one of many, there is always someone new to get to know.

The Presidency of Swedish national union of students

About SFS

The Swedish national student union (SFS) is the umbrella organization of student unions in Sweden. Through our 54 member unions, SFS represents approximately 380 000 students and doctoral students. As the collected student voice, SFS's principal task is to represent the members' and the students' interests. SFS is governed democratically by the member unions, which decides what SFS is and what it does.

The local student unions usually have an influence at a local and regional level – in relation to their own higher education institution, municipality and region. SFS does not usually operate in relation to individual higher education institutions, rather the individual union does this best.

The organization of SFS consists of a board, presidency and three committees. SFS has an international committee (Komit), a quality committee (SQC) and a doctoral students committee (DK). SFS also has an office with employed political advisors, head of communications, member coordinator and operations coordinator. SFS organizes student representatives in different public authorities and organizations related to higher education.

SFS was established in 1921. At the beginning, SFS's principal role was to coordinate Swedish students in international issues and collaborations. The first national lobbying campaign of SFS was about lowering the railway prices for students. During more than 100 years, the issues and ways of operating have changed for SFS. Mainly since the student group itself has altered severely. But SFS still advocates and lobbies for student interests towards national government, political parties, public authorities, trade union organizations and the like.

SFS firmly believes in an open and equal higher education for all, with student influence, quality and internationalization as its core pillars. SFS also stands for the universal right to education, and hence in the necessary social and economic conditions for all to be part of higher education.

The prioritized political questions for SFS right now, is to stop the underfunding of higher education and improve conditions for pedagogical operation. Prioritized political questions for SFS are also student health, student housing, free work placement during education and the funding of student unions.

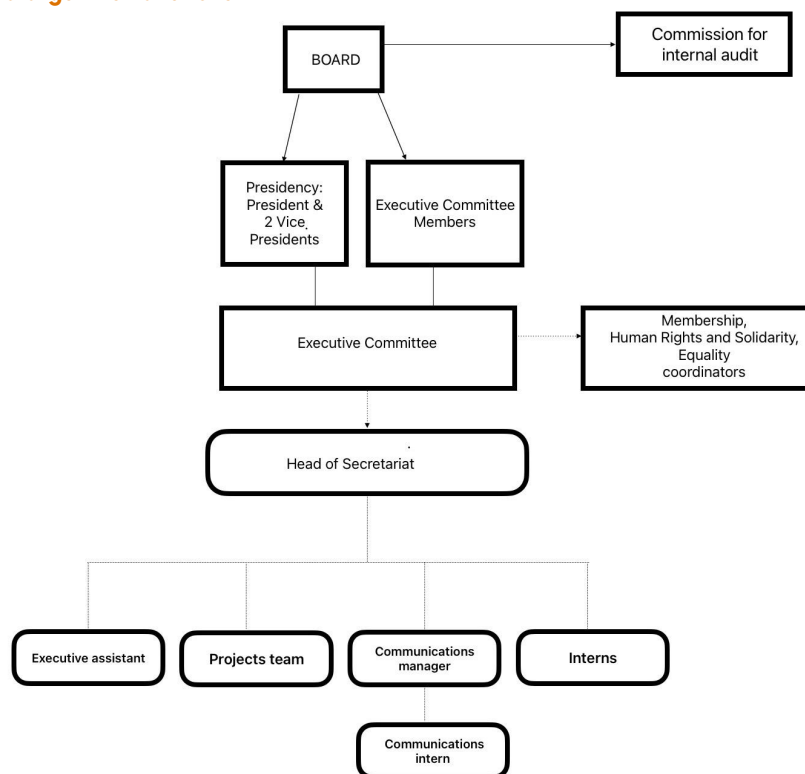


About ESU

The European Students' Union (ESU) is the umbrella organisation of 45 National Unions of Students (NUS) from 40 countries.

The aim of ESU is to represent and promote the educational, social, economic and cultural interests of students at the European level towards all relevant bodies and in particular the European Union, Bologna Follow Up Group, Council of Europe and UNESCO. Through its members ESU represents almost 20 million students in Europe.

ESU organizational chart



Our member unions make up our Board which is ESU's highest governing body. The Board meets twice a year to adopt policy and to elect ESU's representatives for a one year mandate. Each member country is given two votes. ESU's representative structure consists of an elected Executive Committee (EC), whose work is supported by three coordinators, experts' pools and working groups.

ESU representatives



Matteo Vespa

President

matteo.vespa@esu-online.org



Katrīna Sproģe

Vice President

katrina.sproge@esu-online.org



Horia Onița

Vice President

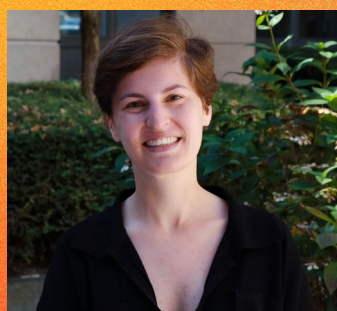
horia.onita@esu-online.org



Tanguy Guibert

Executive Committee Member

tanguy.guibert@esu-online.org



Iris Kimizoglu

Executive Committee Member

iris.kimizoglu@esu-online.org



Andrej Pirjevec

Executive Committee Member

andrej.pirjevec@esu-online.org



Emily MacPherson

Executive Committee Member

emily.macpherson@esu-online.org



Tór Marni Weihe

Executive Committee Member

tor.weihe@esu-online.org



Oraz Myradov

Executive Committee Member

oraz.myradov@esu-online.org



Antoine Bakhach

Human Rights and Solidarity
Coordinator

antoine.bakhash@esu-online.org



Joanna Maruszczak

Membership Coordinator

joanna.maruszczak@esu-online.org



Sandi Rizvić

Equality Coordinator

sandi.rizvic@esu-online.org



Ana Gvritishvili

Executive Committee Member

ana.gvritishvili@esu-online.org

The Board also elects a Commission for Internal Audit (CIA) who act as a financial advisory body. The CIA carries out the internal audit of ESU and presents it at every board meeting. Besides the internal audit they will present an activity report on finances to all Board Meetings. You can contact the CIA by email: cia@esu-online.org. The daily work of the organisation is supported by a Brussels-based Secretariat which consists of a Head of Secretariat, an Executive Assistant, a Communications Manager, three Project Officers, a Communications Intern and other interns as required.

Contacts

Telegram channels during ESC

In the [ESC 45 Informational Channel](#) we will exchange necessary information during the event.

In the [ESC 45 Conversational Group](#) is the informal channel for contact during the event.

Join the telegram channels through clicking the links.

SFS



Amanda Beckman, project manager of ESC

Phone: +46 76 544 01 09

Email: amanda.beckman@sfs.se

Project group



Linn Svärd
President of SFS
+46 70 545 70 45
linn.svard@sfs.se



Jacob Färnert
Vice president of SFS



Ali Al-Zargani
SFS international committee



Louise Ahlström
SFS international committee



Emma Svensson
SFS international committee



Erik Diaz Milla
SFS international committee



Moa Johansson
SFS international committee



Soha Kadhim
SFS executive board and locally
responsible during ESC



Paulina Samuelsson
SFS executive board



Sanela Lulic
SFS executive board

Good to know



Emergency phone number: 112

National dialing code: +46

Time zone: CET

National Currency: Swedish krona (SEK)

In both Lund and Malmö we will walk together or have rented buses for our disposal. In case you need public transportation, google maps works well in both cities.

It is usual for stores to not accept cash, but you can pay with a card everywhere in Sweden.

A normal meal costs around 100-200 kr (9-20€) but you can also have cheaper meals. A normal beer costs about 15-25 SEK (1-2,5€) at Systembolaget and about 50 SEK (4-5€) in a bar.

The weather in the south of Sweden is quite cold in March, with temperatures of +1 - 5 °C degrees. It is therefore recommended to bring a warm jacket. Since there is a risk of rain, an umbrella or raincoat is also good to have.

For the dinner on the inauguration day, it might feel nice to wear something you feel comfortable in. Bring something of your choice!



You can find the official ESC 45 spotify playlist [here!](#)
From the registration we have collected the songs you wanted to add - and some other songs as well.

Laws concerning alcohol and smoking

The legal drinking age is 18. This is very strict and you are often ID'd in bars and shops when buying alcohol or tobacco products. By the time you're 18, you may buy any alcoholic beverage up to 3,5% in the supermarket. The age limit to buy alcoholic beverages in bars is 18 years old. At 20, you are allowed to buy any alcoholic beverages.

Sweden has an alcoholic monopoly, that is that alcoholic beverages can only be bought at the store Systembolaget. To be allowed to buy alcohol you have to be 20 years old and they check your ID. It is a crime to buy alcohol to people younger than 20 years at Systembolaget. At the hotel, drinking is only allowed in the bar or in your room. Consumption of alcohol in the lobby and other open spaces in the hotel is strictly forbidden.

Smoking is strictly prohibited by law at entrances and exits to public places, banned at bars and restaurants, also at outdoor seating. Smoking is banned at public places such as train stations and bus stops.

About Lund and Malmö

During ESC we will stay at a hotel in Lund and spend most days in Lund. However, we will also visit Malmö one of the days.

Lund is a city situated in the southern parts of Sweden. Lund the largest university in Sweden, with Lund University, which was founded in 1666. There lives approximately 40 000 students in the city which makes up about one third of the total population. Hence, the student culture characterizes Lund as a city. The local student unions organize the local student representation and influence, and they have their own buildings or offices. There are also student associations called "nations", which bear the names of the different provinces of Sweden. At the nations there are arrangements of pubs, parties and dinners held. The student life of Lund also includes student theaters, choirs, etc. Apart from the student life, Lund offers a lot of other different cultural activities, museums and exciting historical venues to visit. Lund is also the venue for the two large scientific facilities MAX IV and the European ESS.

Malmö is the third largest city in Sweden, and located 20 km south of Lund. Malmö is a larger city in comparison to Lund and has a bigger urban center. Malmö university was founded in 1998 and received the full title of a university in 2018. Approximately 60 000 students study in Malmö, which makes the student population one seventh of the total population. The local student unions in Malmö organize the student representation and influence, but also arranges pubs and social activities. The student traditions differ from the student life of Lund, where the student life is a more integrated part of the city. Malmö has a large number of pubs, cultural activities and restaurants. Through the Öresund bridge the city is also characterized by its close connection to Copenhagen, Denmark, with which there is a close cultural exchange.

Agenda

The agenda is subject to change. You will find the current version through the QR-code on your name tag.

Tuesday 7/3 - Opening ceremony
<i>Venue: Lund University aula, Local student union (TLTH) and AF-borgen.</i>
SFS will write on Telegram and guide to the inauguration.
10:00 Opening speech by Mats Persson, Minister of Education Linn Svärd, president of SFS Matteo Vespa, president of ESU Lena Eskilsson, Deputy Vice-Chancellor Lund University <i>Venue: Lund University aula</i>
10:30 Coffee and mingle.
11:00 Seminar on the history and future of student representation in Sweden , arranged by SFS and Lund University Lecture by Mike Day, Rebecca Selberg and Gunnel Holm Followed by a panel on the future of student representation together with Mike Day, Emmy Svensson, president of Student association at Lund University, Matilda Horn and Matteo Vespa. Moderated by: Jimmie Kristensson, Pro Vice-Chancellor at Lund University.
13:00 Lunch in Gasquesalen, TLTH.

Monday 6/3 - Arrival day
15:00 Check in at Elite Hotel Ideon, Lund. SFS welcomes and registers participants in the reception during the afternoon.
18:00-20:00 Dinner at the hotel restaurant.
20:00-22:00 Quiz night at the hotel hosted by SFS in room "Tera".

(Tuesday continued)
14:45-15:15 SDG 4 Academic Freedom 101: Academic Freedom is the new hot topic in Europe. At the same time it is severely underresearched with the student perspective missing almost entirely from the discourse. Thus this session will introduce you to the concept of Academic Freedom and how it can relate to students' rights. Facilitated by Iris Kimizoglu
15:15-16:15 Academic Freedom's Presentation OSF - In the frame of the academic Freedom project, a contest of campaigning mini-projects has been organised one month ago. The three awarded groups will present there project and planned activities to spread the word about academic freedom threats and ways of engagement into this topic.
16:15 Free time.
17:30 Lecture on the history of Lund and Lund university in the Lund University aula.
18:30 Predrink in the Lund University house.
19:00 Traditional student dinner at AF-borgen Together with representatives from local student unions, Lund University and Lund municipality. The pub will be open after dinner. <i>Sponsored by Lund university and Lund municipality</i>

Wednesday 8/3 (International Women's Day)
<i>Venue: Malmö University (Orkanen, D138 Auditorium)</i>
08.50 Bus arrives to the hotel.
09.00 Bus from Hotel Ideon in Lund to Malmö University, Orkanen.
09:50 Welcome from Rebecka Lettevall, Malmö University and Milena Milosavljevic, Student union of Malmö.
10:00–10:45 SDG 3 How can students take care of their health and wellbeing? Claes Andersson, Associate Professor, Malmö University.
10:45–11:00 Break.
11:00–11:45 What does the future of Quality Assurance in Europe look like? In this session we will present the preliminary findings of the QA FIT survey on the future of QA in EHEA and discuss main points of development for the future, including ESU goals and NUSes goals. Facilitated by Vice President Horia Onita.
11:45–12:00 Break.
12:00–13:00 SDG 10 Higher Education's role in reducing inequality. How can we ensure students with minority backgrounds feel included in higher education and its' democratic structures? EC member Emily MacPherson and Human Rights and Solidarity Coordinator Antoine Bakhash Crippling Higher Education Inclusion/exclusion in university classrooms and web pages Elisabet Apelmo, visual artist with a PhD in Sociology, Lecturer in social work and Camilla Nordgren, PhD, Lecturer in social work specializing in disability studies, Malmö University
13.00 Lunch in Orkanen, sponsored by Malmö University.

(Wednesday continued)
14:00–15.00 What are the possibilities of the European University Initiative (EUI) from a student perspective? Joint session with the Swedish Council for HE (UHR), SFS and ESU. Moderated by Tori Heitmann Jørgensen (Social Sciences Student Union at Lund University) and Tanguy Guibert (ESU) and they are joined on the panel by Julia Kostro (4EU+ Alliance) and Emma Svensson (SFS).
15:15–16:00 SDG 13 Energy Politics and Justice: An Ecofeminist Ethical Analysis of the Swedish Parliamentary Debate. Anders Melin, Associate Professor in Ethics, Malmö University.
16:00–16:15 Break
16:15– 17:00 Women's session: Sharing circle where participants who identify as women are welcome to come and share their experiences in a safe, supportive space facilitated by EC member Emily MacPherson
16:15–17:00 Allyship session This session is open to anyone that does not participate in the women's meeting. We will discuss ways of being an ally to marginalised groups both at a personal and organisational level. Facilitated by Equality coordinator Sandi Rizvić.
17:00–18:00 SDG 5 Looking towards 2030 what can we do for a more equal higher education system? Workshop facilitated by Sandi Rizvić and Emily MacPherson.
18.00 Walk and talk around Malmö, ends at Malmö town hall. Guided by local SFS representatives.
19:15 Dinner and mingle at Malmö Town Hall, welcomed by Carina Nilsson, chairman of municipal council of Malmö, Kerstin Tham, vice-chancellor of Malmö University, and Milena Milosavljevic, president of Student union Malmö.
21:30 Transportation by bus back to hotel in Lund.

Thursday 9/3
<i>Venue: Gasquesalen TLTH</i>
09:00–09:30 Bologna is not just a place in Italy. The SDGs cover everything. Bologna is everything we do in higher education in Europe, it's a whole process! This session will set the scene for the rest of the day and is useful if this is the first time you've heard of it or need a refresher. Facilitated by our very own Bologna alumni President Matteo Vespa.
09:30–10:30 Bologna Hub Peer Support: What are the key commitments of the Bologna process and how can we implement them? In this session we will present the project, which aims to support HEIs and local student unions in their plans to implement key commitments (qualifications frameworks and learning outcomes, recognition and ECTS, quality assurance). We will discuss the main barriers still existing to implement the commitments at national and local level. Facilitated by VP Horia Onita.
10:30–10:45 Break.
10:45–12:00 Bologna With Student Eyes – Now we have set the scene: but what is happening within the Bologna Process? What are the issues and the fights ahead of the Ministerial Conference in Tirana 2024? And how can you influence the Bologna Process in your country and in Europe? This session will see the launch of the Bologna With Student Eyes survey, which will gather the NUSes vision on the Bologna Process in their country and inform our longstanding publication on how students see the state of the art of the Bologna.
12:00–12:15 Break.
12:15–13:00 AI in HEI and UE hosted by Fage x UDU. AI is an emerging technology that has been reshuffling the cards in the last years. The major changes induced in industry, economics, higher education...has led UE to launch the AI Act as a response to such a game changing breakthrough. Discover the ins and outs of such a revolution in higher education and in Europe. Facilitated by Bastien Degardins (FAGE) and Lisa Schivalocchi (UDU).

(Thursday continued)
13:00 – 14:00 Lunch in TLTH building. Sponsored by Erasmus+.
14:00–15:00 Creating a monitoring system for social dimension policies. The Working Group on Social Dimension in BFUG, co-chaired by ESU, will start working on creating a monitoring system for the social dimension policies in Europe. What are students expecting? Facilitated by VP Horia Onita.
15:00–15:15 Break
15:15–16:15 SDG 10 Erasmus4All In times when student mobility is becoming more popular, how to ensure that learning mobilities under Erasmus+ umbrella are affordable and available for everyone who wishes to join the program? Within the project we look for ways to reformulate the grant calculations to make sure that Erasmus truly is accessible for all. In the session we will focus on defining the expenses associated with student mobility. Facilitated by VP Katrīna Sproģe.
16:15–17:00 Making space for the student movement at the UN In an increasingly globalised world, the Global Student Forum has since 2020 worked to connect student unions across continents and lobbied for student voices to be heard by the international community. This session will highlight some of the latest work on student rights, sustainable education, and students as more than stakeholders. This session will also serve to gather a European student union perspective on the development of the new UN Youth Office. Facilitated by Jacob Blasius, Global Student Forum.
17:00–17:45 Student housing in Sweden Workshop on student housing in Europe, with examples from Sweden. How can we advocate for better housing conditions for all students?
17:45–19:15 Free time.
19:15 Dinner at TLTH.
21:00–01:00 Intercultural night + party at TLTH. No sale of alcohol, BYOB.

The agenda continues on the next page.

Friday 10/3 - Departure day
09:00 Check out from hotel
13.00 Lunch at the hotel
14:00 Departure

LGBTQ+ meeting

This meeting is for anyone identifying as LGBTQ+ and is a closed, safe space to meet other LGBTQ+ participants to discuss various topics. To participate, you must get in touch with the Equality Coordinator, Sandi Rizvic, where you will be informed about time and place. Please also get in touch with Sandi if you have any questions about the meeting. Everything is of course handled with anonymity if wished for, as is the meeting itself, so we also welcome people who are not yet out or questioning to join, if they feel comfortable.

Travel

The ESC starts and ends in Lund, and there are many ways to get there. We want to encourage an environmentally friendly way of traveling, so preferably limit your carbon footprint and stay on the ground!

By train:

Hamburg – Copenhagen – Lund C

By boat:

Świnoujście/Rostock/Klaipėda –Trelleborg – Train to Lund C

By plane:

Fly to Malmö Airport – Bus to Malmö C – Train to Lund C

or

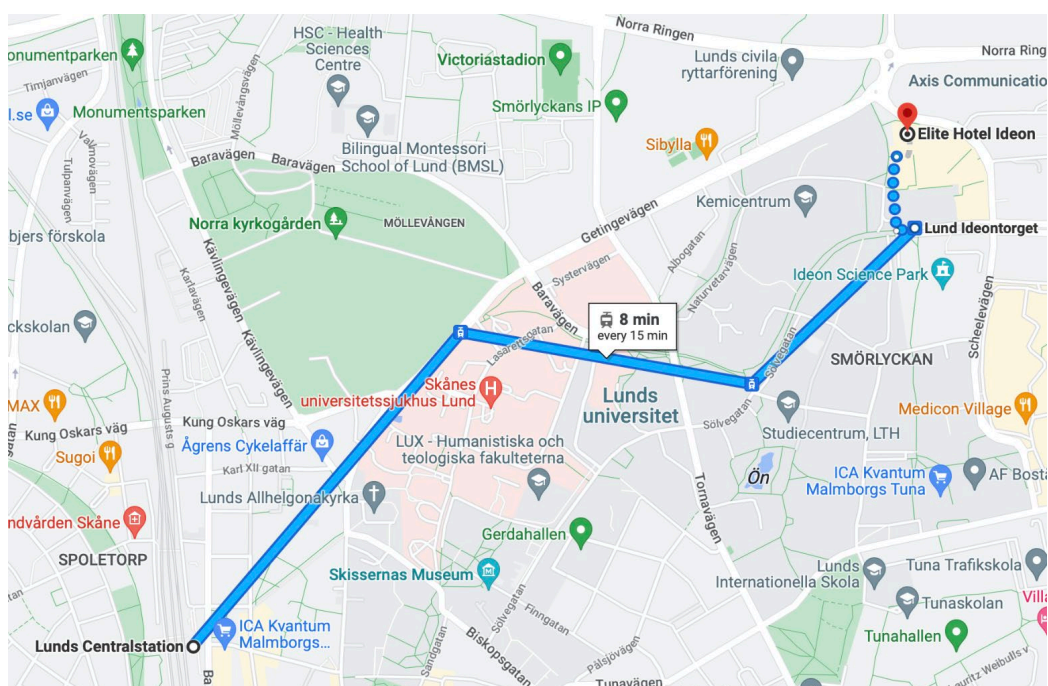
Fly to Copenhagen Airport (Kastrup) – Train to Lund C

Accommodation

During ESC we will stay at Elite Hotel Ideon in Lund. SFS will be at the hotel Ideon in Lund for check in at the hotel during the afternoon of the 6th of March. This is also when you will get your name tag.

According to the preferences you stated in the registration form, you will be handed a hotel room.

Map of directions from Lund Central Station to Hotel Ideon



To get to the hotel from Lund Central station is a 30 minute walk or an 8 minute tram ride. Since the way to the hotel is uphill, we recommend that you take the tram. [Click here](#) for a link to the hotel on Google Maps.

You then have to take a tram towards Lund Ringhornegränden, to the station “Lund Ideon Gateway”. You can buy tickets for the bus in one of the automats (looks like [this](#)) or in the app “Skånetrafiken”, available in Appstore or Google play.

Addresses

Addresses in Lund

Hotel Ideon

Scheelevägen 27, 223 63 Lund

Inauguration in Lund university aula,

Universitetshuset 223 50 Lund

Session room: Gasquesalen at Teknologkåren

Sölvegatan 22 B, 223 62 Lund

Addresses in Malmö

Session room: Auditorium at Orkanen, Malmö university

Nordenskiöldsgatan 10, 211 19 Malmö

Malmö city hall

Kompanigatan 5, 211 35 Malmö

Currency

The currency in Sweden is the Swedish kronor, SEK. Due to the current economic situation the value of SEK has lowered in comparison to other currencies. Now 1 € is about 11 kronor (February 2023).

Visa information

If you are visiting Sweden and are a citizen of a non-EU country, you may need a visa. This includes citizens of Armenia and Belarus.

Citizens of Bosnia-Herzegovina, Georgia, Moldova, Montenegro, Serbia and Ukraine, might not need a visa if you have a biometric passport.

Dictionary

Hej = Hi

Hur mår du? = How are you?

Jag mår bra = I am good

Tack = Thanks

Vad heter du? = What is your name?

Jag heter (namn) = My name is (name)

Studentkår = Student union

Spex = Student comedy theatre

Sittning = Traditional student dinner

Social media

While attending ESC you can use the hashtag #ESC45 in social media.

Creating a Safe and Inclusive Space at the ESC

The ESC is a discrimination free event with a zero-hate speech tolerance approach. Through the Code of Conduct (CoC) and through a communal effort, a safe and inclusive environment is created for everyone, based on values of equality and mutual respect.

The Trusted Persons Team (TPT) can be approached at any time, if ESC participants feel unsafe, unfairly treated, threatened or attacked, discriminated against or othered. Any breach of the CoC can be reported anonymously or not to the TPT through the contacting and reporting form. All reported incidents are treated, respectfully, discreetly, confidentially, timely and taken seriously. The contact details of the selected TPT will be shared at the beginning of and made visible throughout the event. An online form is linked below in order to contact the TPT digitally, or anonymously, if needed.

For the ESC to be an inclusive space for everyone and to avoid gender discrimination, some recommendations:

- Please explain abbreviations
- Please use gender-neutral or gender-inclusive language.
- Please address people according to their preferred gender pronouns, or simply use their names

Important Links

Code of Conduct: <https://bit.ly/40FV3jx>

Online report form: <https://forms.gle/C2WT6XVZdQhiobqFA>

Gender Inclusive Language Guide: <https://unc.live/2xlvACe>

Gender Pronouns Examples: <https://bit.ly/3JV9SJ1>

Trusted Persons Team



Sandi Rizvić (He/Him)
Equality Coordinator
sandi.rizvic@esu-online.org
Languages: English, Danish, Serbo-Croatian
Tel: +45 50472963
Telegram, Whatsapp, SMS,
Phone call, Facebook messenger,



Oraz Myradov (He/She)
Executive Committee Member
oraz.myradov@esu-online.org
Languages: English, Russian
Tel: +49 17657698451
Telegram, Whatsapp, Phone call,
Mail



Ellie Gomersall (She/Her)
NUS-UK Representative
ellie.gomersall@nus-scotland.org.uk
Languages: English
Tel: +44 7788 218212
Phone, SMS, WhatsApp, Facebook
Messenger, Telegram, Instagram,



Julia Kostro (She/Her)
PSRP Representative
j.kostro@psrp.org.pl
Languages: English, Polish
Tel: +48 503 478 928
Phone, SMS, Whatsapp, Telegram,
Facebook Messenger



Soha Kadhim (She/Her)
SFS representative,
soha.kadhim@sfs.se
Languages: English, Swedish,
Arabic
Tel: +46 739604614
WhatsApp, Messenger, Phone calls

Join a trade union

The way to sustainable societies begins with better working conditions. And it all starts with you.

To create equal opportunities for employees world wide, we need to unite. When you join a trade union, you make it possible for us to work to improve conditions, education, wages and opportunities for both students and workers.

8 significant changes to society made by unions

- A national minimum wage
- Improved worker safety
- Improving living standards by reducing the number of hours in the working week and encouraging a healthy work/life balance
- Improved parental leave
- The abolition of child labour
- Equality legislation
- Better protection of migrant workers and a reduction in exploitation
- Minimum holiday and sickness entitlements

**Help us continue the work – join a trade union.
Union membership equals strength.**



Akademikerförbundet SSR

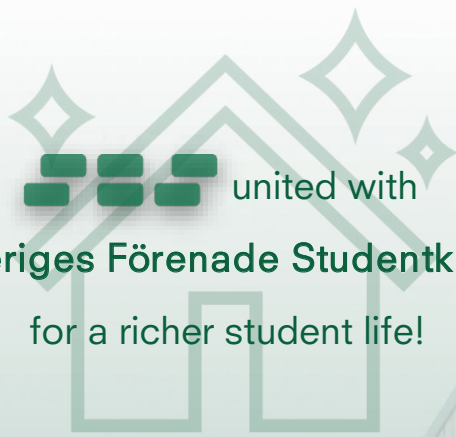
Akademikerförbundet SSR is a Swedish trade union for university graduates with a degree in social science, behavioral science or social work. We are a member of Saco, the Swedish Confederation of Professional Associations, a politically independent confederation of 22 unions of university graduates with a total of around 600 000 members. We are also a member of PSI, Public Services International, and EPSU, the European Public Services Unions.

**European Students' Convention 45
proudly sponsored by Sparbanken
Skåne – a regional savings bank.**



**Sparbanken
Skåne**





Sveriges Förenade Studentkårer
for a richer student life!



**STUDENTBOSTÄDER
I NORDEN AB**

HOUSING IN ALL STUDENT TOWNS!

The housing should not be in the way for your choice of education.

As a student, you should be able to choose education in the first place and the student housing should follow. However, the student world is not only about the studies, but the student life is also as important!

Our cities



How do we cooperate with local student unions?

- We offer student union members promotions to our homes,
- We are involved / sponsor union events such as student kickoff and open houses,
- We offer access to public areas of the properties such as student clubs and gyms,
- And a whole lot more!

What we offer students:

- Student housing of quality with facilities such as study rooms, student clubs and gyms.
- Flexible, digitized housing agency.
- Accommodation app where you can find all information about the property.
- Priority at our other student housing throughout Sweden!

Följ SBS på sociala medier!



@sbsstudent_se



@SBS Studentbostäder

Start your career “in good company” with Tetra Pak!



Join us in protecting food,
people and the planet.

 **Tetra Pak**[®]
PROTECTS WHAT'S GOOD

ESC 45 is organized in partnership with Tetra Pak